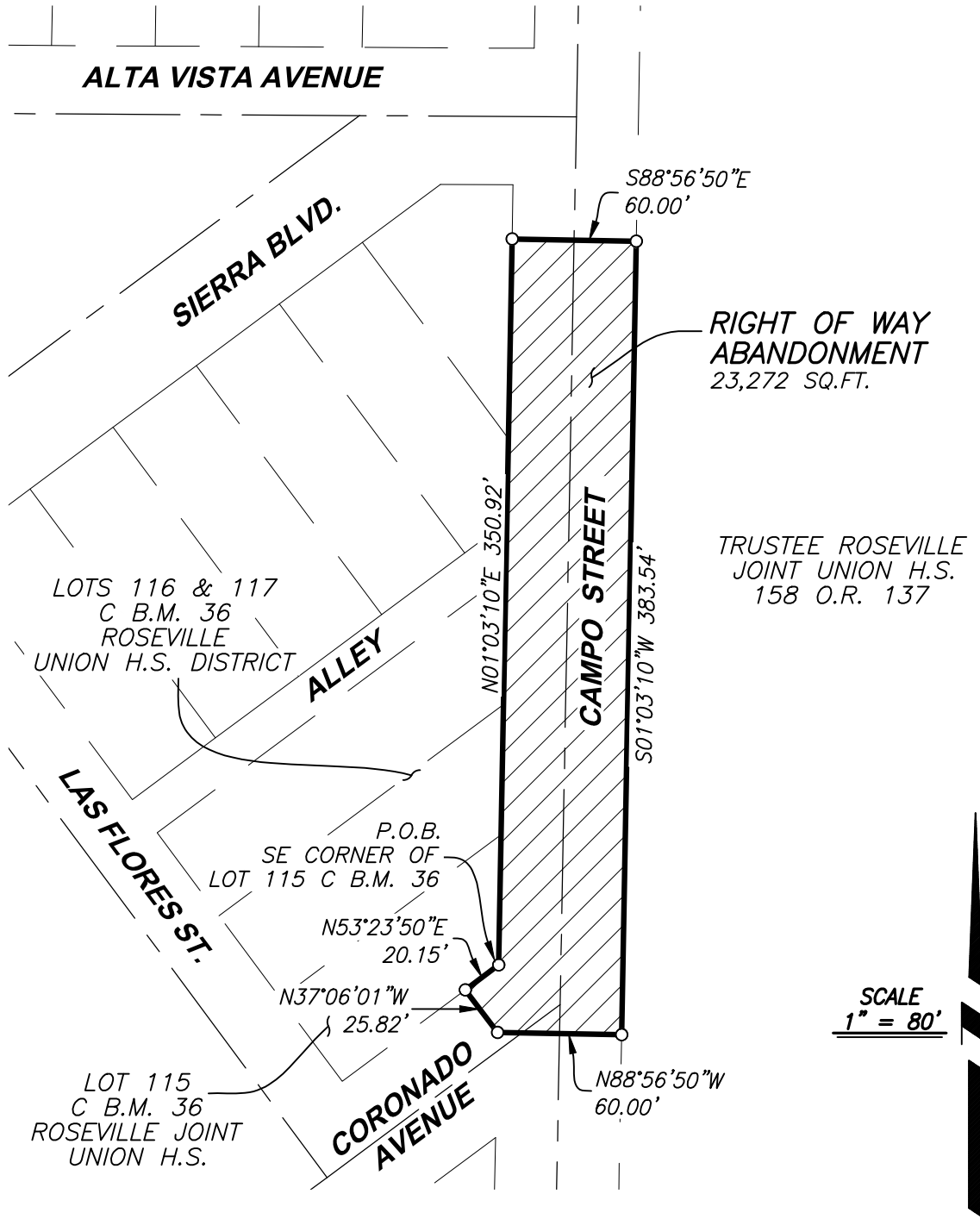


EXHIBIT B



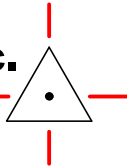
**RIGHT OF WAY ABANDONMENT
CAMPOS STREET & CORONADO AVENUE
ROSEVILLE HIGH SCHOOL
CITY OF ROSEVILLE, PLACER COUNTY, CALIFORNIA**



CenterPoint Engineering, Inc.

Civil Engineering & Land Surveying

4230 Rocklin Rd., Suite 200 • Rocklin, CA • 95677
Phone: 916-773-4006 Fax: 916-773-4498



DRAWN BY: BB
CHECKED BY: AE
SHEET: 1 OF 1
DATE: 7-25-2024

Braden Barnum